



**THE NEW MANHATTAN PROJECT**

**WIRELESS BODY AREA NETWORK**

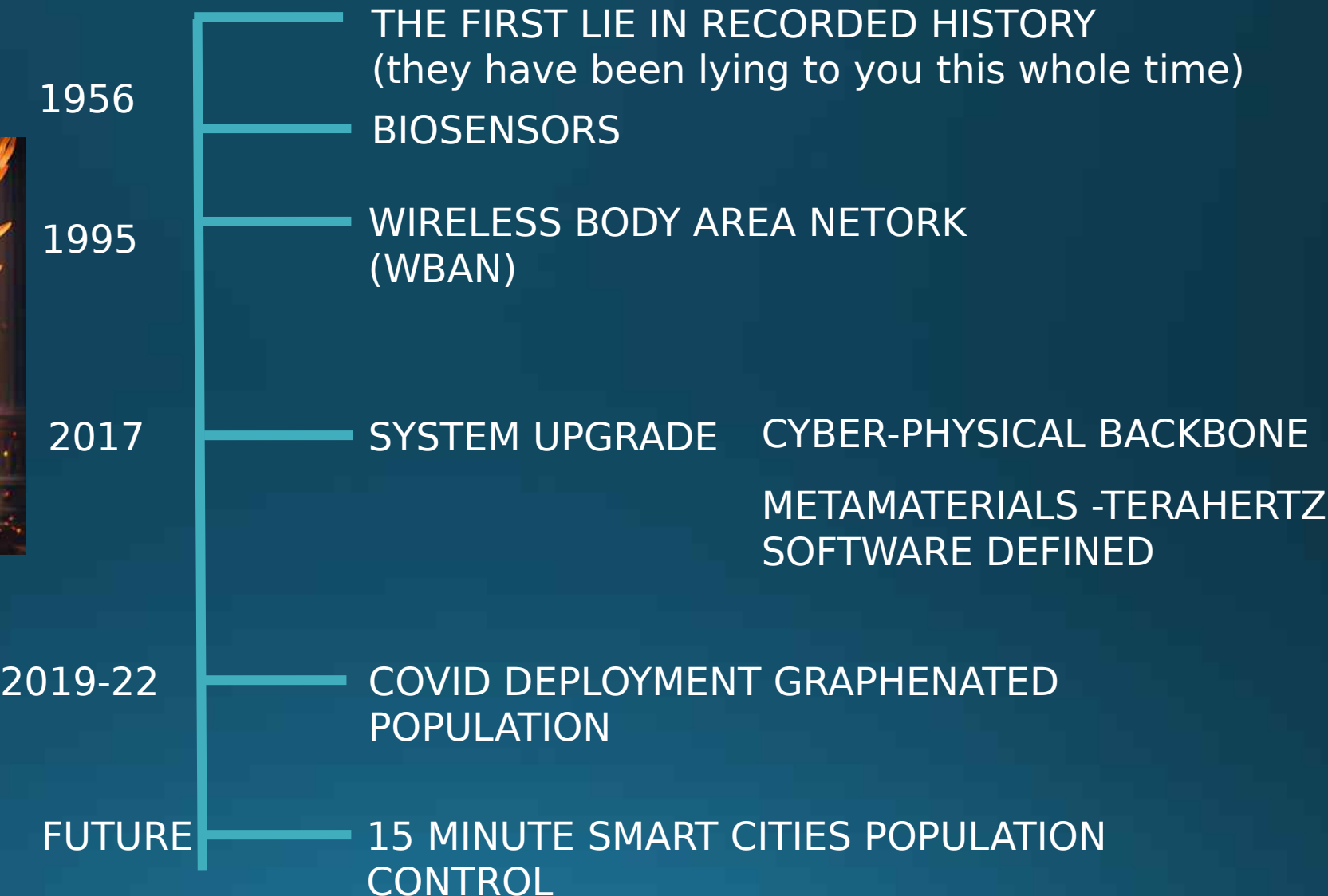


# TIMELINE

“YE SHALL BE AS GODS”



THIS IS TRANSHUMANISM  
THE 4<sup>TH</sup> INDUSTRIAL  
REVOLUTION  
AS IN THE DAYS OF NOAH



# INSTITUTE OF ELECTRICAL AND ELECTRONICS ENGINEERS (IEEE)

THE INDUSTRY  
THAT IS BRINGING YOU  
TRANSUMANISM



**DR. THOMAS  
COUGHLIN**  
PRESIDENT IEEE

The IEEE is the **WORLDS LARGEST** technical professional organization dedicated to advancing technology for the benefit of humanity.

Comprised of: Physicists, Chemists, Engineers, Electricians, Radio Engineers, Computer Networking and **MUCH MORE THAN ELECTRICAL ENGINEERS.**

They are the **WORLDS LARGEST** international society of **BIOMEDICAL ENGINEERS.**

They make all the standards for the internet and wireless world wide. They are involved in forming public policy for all governments.

They are in 190 countries, 64 percent of their organizations membership is located **OUTSIDE** of the United States.

They have more than 5 million white papers with 200,000 more added annually and sponsor 2,000 conferences and events in 106 countries.

They have 3,700 branches at colleges and universities in over 100 countries

They have 3625 Student branch Chapters of IEEE technical societies

DO NOT  
IGNORE  
IEEE  
WHITE PAPER  
REFERENCES!

“that’s not real,  
it doesn’t exist”

IEEE research is accessible through membership and a pay wall. We joined, here is what we found.

[WWW.FTWPROJECT.CO](http://WWW.FTWPROJECT.CO)

# BIOFIELD

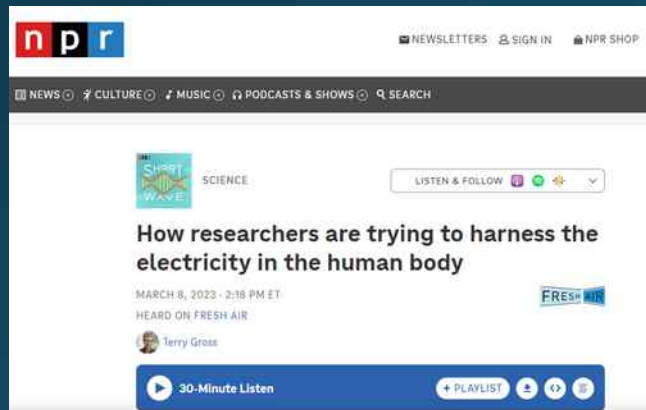


The human body is electrical and has an electromagnetic field. All the chemical reactions in our body are mediated by an electrical signal that goes through our systems.

The biofield or biological field, a complex organizing energy field engaged in the generation, maintenance, and regulation of biological homeodynamics (systems). FROM NIH WEBSITE

There are tons of medical journal articles and white papers that discuss using the electricity produced by the human body as a conductor for a wireless power transfer.

The biofield is the “scientifically accepted” term in Western medicine. In other cultures through history it has also been referred to as “CHI” “Prana” etc. It is the life force that is emitted through all living things.





# BIOSENSORS



A biosensor is an integrated receptor-transducer device, which can convert a biological response into an electrical signal. The design and development of biosensors have taken a center stage for researchers or scientists in the recent decade owing to the wide range of biosensor applications, such as health care and disease diagnosis, environmental monitoring, water and food quality monitoring, and drug delivery.

-Biosensors have been around since 1956 (the first being electro-chemical), they were made commercially available in 2010 and many different kinds of biosensors have been developed and are used for all sorts of different things.

-There are several kinds of biosensors: optical, piezoelectric, electrochemical, hybridized synthetic biology.

-There are a million ways that biosensors have been put into human bodies without a person's knowledge or consent. (air, water, food, vaccines, etc.)

-Biosensors also have the ability to modify the DNA of the subject.

-They are Micro and NANO in scale and located in the interstitial fluid in between your cells.

-Biosensors use your body's natural electric energy to power themselves and emit a data signal that is connected to the internet of things. They communicate with electricity just like your cell phone. Cell phones can be "bootstrapping" devices for biosensors.

-Biosensors that are made out of hybridizing your DNA emit a signal using electrochemical elements such as light and can be controlled using optogenetics (controlling biological systems through light)

Whistleblower in the field comes forward.

Mentions the Abuse of Wireless Sensor Network and Covid

Paper Discussed Between Todd Callender and Maria Zee

[WWW.FTWPROJECT.CO](http://WWW.FTWPROJECT.CO)

American Journal of Bioinformatics Research

p-ISSN: 2167-6992 e-ISSN: 2167-6976

2021; 11(1): 1-31

doi:10.5923/j.bioinformatics.20211101.01

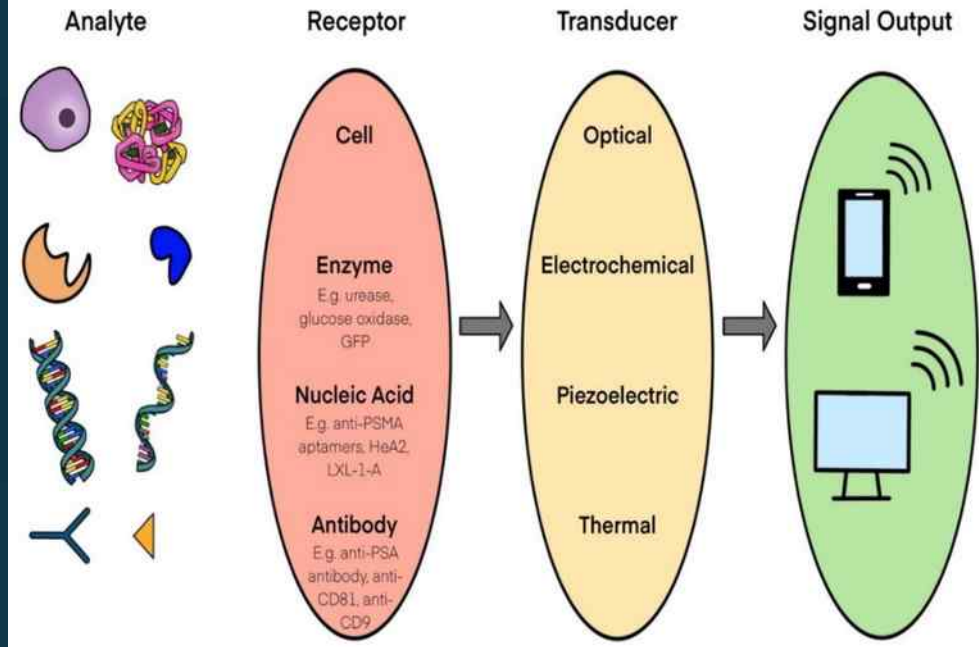
Received: Jan. 16, 2021; Accepted: Feb. 20, 2021; Published: Mar. 3, 2021

**Effect of Coronavirus Worldwide through Misusing of Wireless Sensor Networks**

# BIOSENSORS

There are 4 Main Components of a Biosensor

## Elements of Biosensors



1) Analyte = a chemical or biological material that gives the electron reaction as it is connected

2) Receptor = also known as the recognition layer that binds to the target component

3) Transducer = acts as an interface measuring the production that occurs with the bioreceptor, transforms energy into a measurement

4) Signal = Component that Displays the information

### What Biosensors are used for:

- Analysis of Living subjects remotely can use anything in your body (blood, glucose, etc.)
- Obtain Sample, analyze and transmit data
- Uses your body natural electric energy to power itself and to send and receive data.

Energy harvesting Internet of Things health-based paradigm: Towards outage probability reduction through inter-wireless body area network cooperation

[Ahmed A Thabit](#), [Mahmoud Shaker Mahmoud](#), [T. J.](#), and [Qammer H Abbasi](#)  [View all authors and affiliations](#)

[All Articles](#) | <https://doi.org/10.1177/1550147719879870>

HUMAN BODIES ARE NODES ON THE NETWORK

WWW.FTWPROJECT.CO



# IEEE 802.15.4

Dealing with standards for communication with portable devices BODIES INCLUDED

<https://standards.ieee.org/ieee/802.15.4/7029/>

IEEE.org | IEEE Xplore Digital Library | IEEE Standards | IEEE Spectrum | More Sites

**IEEE SA** STANDARDS ASSOCIATION

Standards | Products & Programs | Focuses | Get Involved | Resources

IEEE 802.15.4-2020

## IEEE Standard for Low-Rate Wireless Networks

[Purchase](#) | [Access via the IEEE Get Program](#) | [Access via Subscription](#)

The physical layer (PHY) and medium access control (MAC) sublayer specifications for low-data-rate wireless connectivity with fixed, portable, and moving devices with no battery or very limited battery consumption requirements are defined in this standard. In addition, the standard provides modes that allow for precision ranging. PHYs are defined for devices operating in a variety of geographic regions. (The PDF of the standard is available at no cost at <https://ieeexplore.ieee.org/browse/standards/get-program/page/series?id=68> compliments of the IEEE GET program)



# IEEE 802.15.6

Dealing with standards for inter body communication  
INSIDE THE BODY THEN GOING OUT FROM THE BODY

<https://standards.ieee.org/ieee/802.15.6/5364/>

**IEEE SA** STANDARDS ASSOCIATION

Standards Products & Programs Focuses Get Invol

[Access via the IEEE Get Program](#) [Access via Subscription](#)

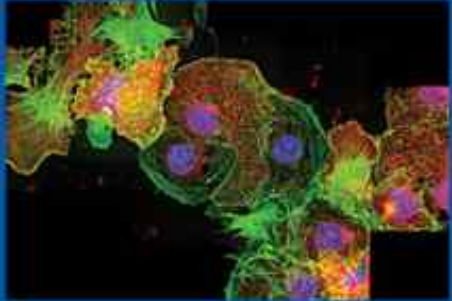
Short-range, wireless communications in the vicinity of, or inside, a human body (but not limited to humans) are specified in this standard. It uses existing industrial scientific medical (ISM) bands as well as frequency bands approved by national medical and/or regulatory authorities. Support for quality of service (QoS), extremely low power, and data rates up to 10 Mbps is required while simultaneously complying with strict non-interference guidelines where needed. This standard considers effects on portable antennas due to the presence of a person (varying with male, female, skinny, heavy, etc.), radiation pattern shaping to minimize the specific absorption rate (SAR) into the body, and changes in characteristics as a result of the user motions. (The PDF of this standard is available at no cost at <https://ieeexplore.ieee.org/browse/standards/get-program/page> compliments of the IEEE GET program.



# BIO PHOTONICS / OPTIGENETICS / VLC

## Biophotonics

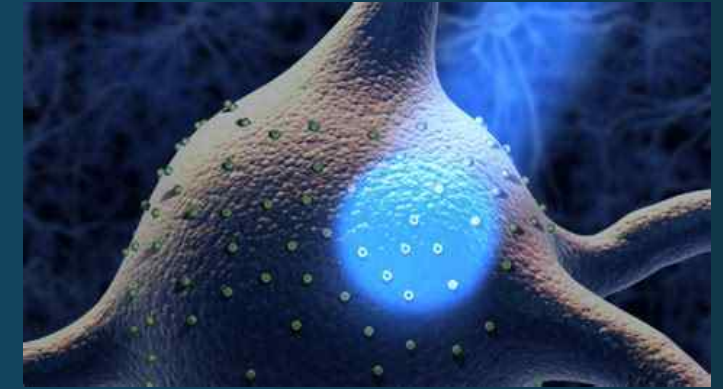
Science and Technology



**BIOPHOTONICS** is a field of biology and photonics that combines the interaction of light and biological materials.

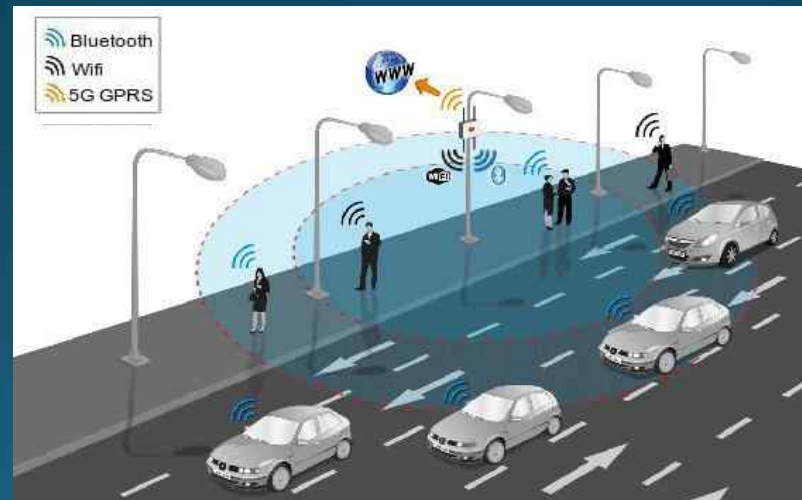
**OPTIGENETICS** is a biological technique to control the activity of neurons or other cell types with light. This is achieved by expression of light-sensitive ion channels, pumps or enzymes specifically in the target cells.

Biosensors could be used to make a change to people's receptors within their body. For people whose receptors have been changed, they can be more sensitive to certain kinds of light signaling from the environment or a wireless network.



## Visible Light Communication (VLC)

In telecommunications, visible light communication is the use of visible light as a transmission medium. VLC is a subset of optical wireless communications technologies. The technology uses fluorescent lamps to transmit signals at 10 kbit/s, or LEDs for up to 500 Mbit/s over short distances.



Examples: New VLC Lighting that will be used to control people.

# WEAKNESSES IN THEIR SYSTEM



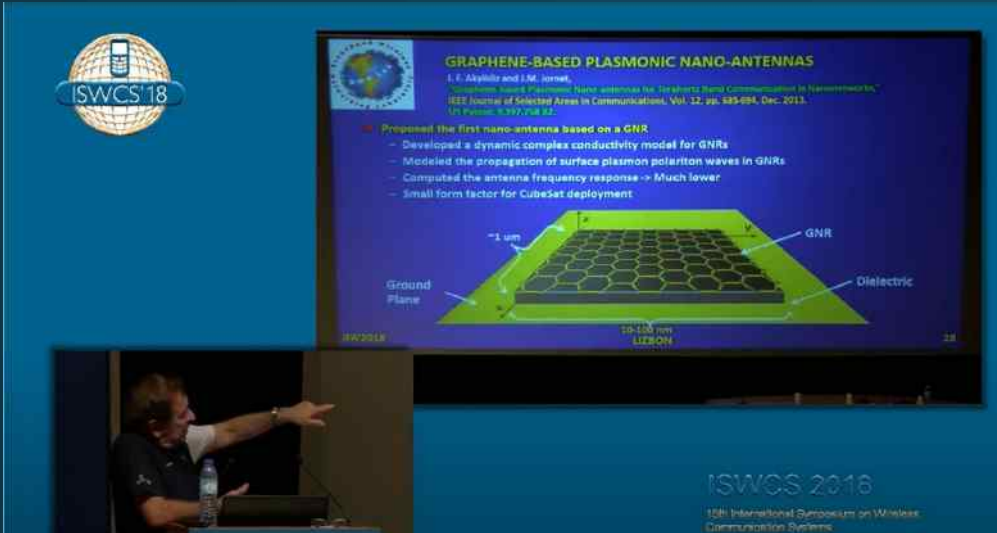
The leaders in this industry give presentations where they clearly list the obstacles or weaknesses in their technology that they struggled to overcome. Below is a list of examples. This is why they needed to UPGRADE the system in order to get the tech to work well enough to achieve their goals.

They couldn't get the electromagnetic waves across the old network.

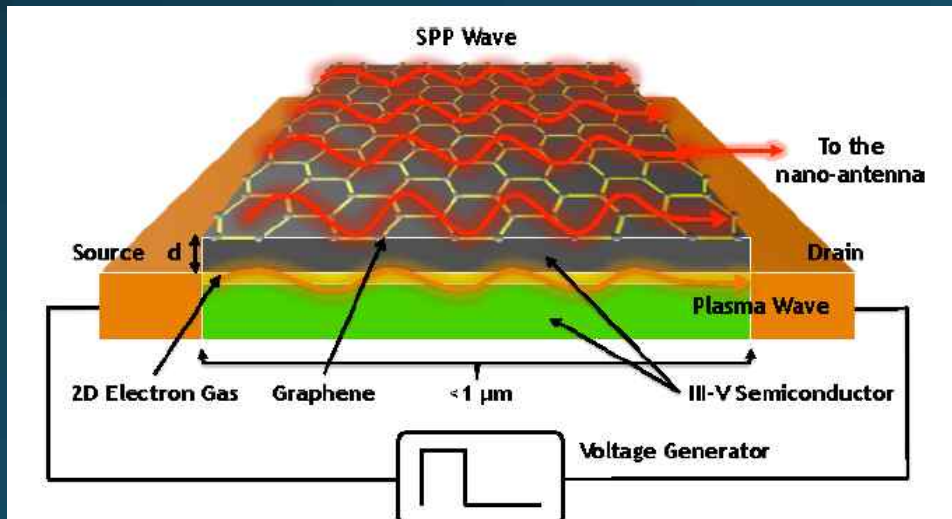
## **Problems with the old system:**

- Free space
- Signal absorption
- Interference
- Line of sight propagation
- Fading
- Doppler Effects
- Distance (especially 60GHz and Thz bands)
- Energy consumption
- Coverage

# METAMATERIALS TERAHERTZ SOFTWARE DEFINED



“COVID Vaccines are bio-nano machines”



From our last presentation, Metamaterials Terahertz software defined is the suite of nanoscale technologies with the terahertz frequency range.

These technologies were basically “on hold” to the commercial world by governments (even though they were developed). They were released in 2017 as part of an infrastructure upgrade to the Global Information Network, which would be further initiated 3 years later with the graphenation of the population through the COVID Injections.

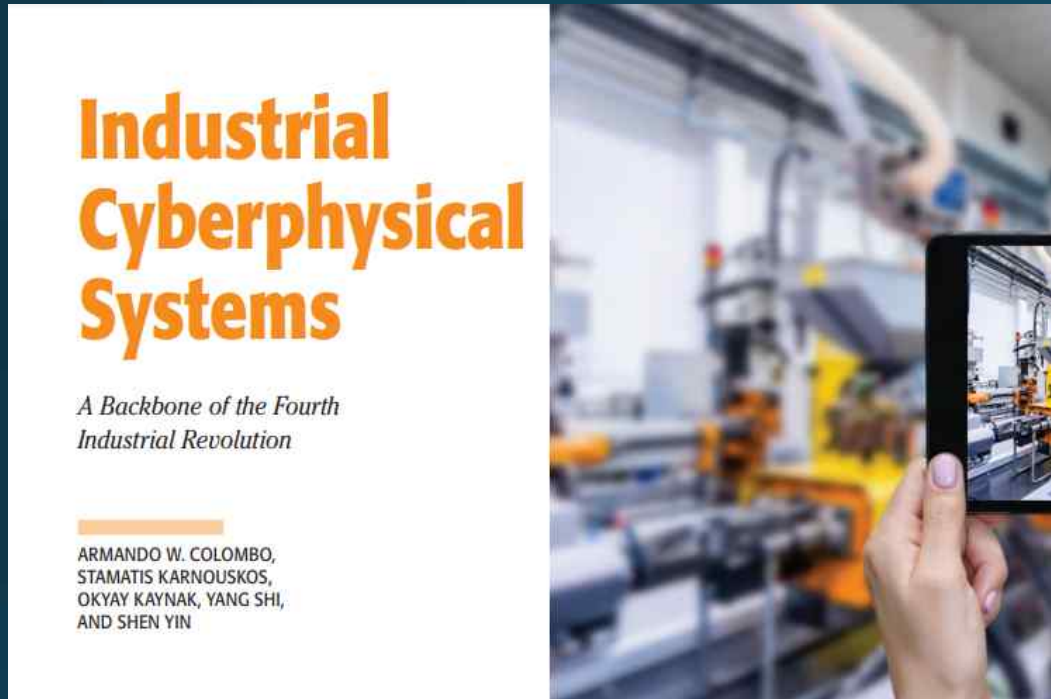
Ian Akyildiz and Josep Jornet are Industry leaders in all things “Internet of Things”. (IOT IOB IONT etc.)

These materials are GRAPHENE BASED which is a necessary part of these new technologies and what was needed to get them to work. Hence the upgrade.



# CYBER-PHYSICAL BACKBONE

NEW SYSTEM INFRASTRUCTURE INCLUDES EVERYTHING:  
5G TOWERS, SATELLITES, METAMATERIALS, FIBEROPTICS ETC.



IEEE Paper:

## **Industrial Cyberphysical Systems: A Backbone of the Fourth Industrial Revolution**

This Infrastructure was deployed in 2017. Same Year the Terahertz Metamaterials were deployed.

A cyber-physical system (CPS) or intelligent system is a computer system in which a mechanism is controlled or monitored by computer-based algorithms.

A backbone or core network is a part of a computer network which interconnects networks, providing a path for the exchange of information between different LANs or subnetworks. A backbone can tie together diverse networks in the same building, in different buildings in a campus environment, or over wide areas.

cyber-physical systems (CPS) and the Internet of Things (IoT) are converging over time to include a common emphasis on hybrid systems of interacting digital, analog, physical, and human components (from NIST) [WWW.FTWPROJECT.CO](http://WWW.FTWPROJECT.CO)

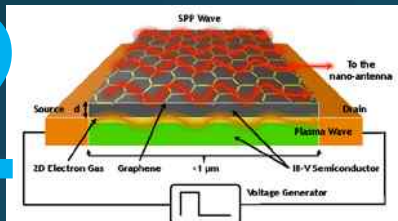
# THE SYSTEM UPGRADE

1



Even with all the technology they had developed up to this point, it still wasn't doing what they wanted it to (meaning control humans) at the levels of speed and efficiency that they needed. So they did a full system upgrade.

2



This upgrade was initiated in 2017 when they installed the infrastructure for the new system known as the cyber-physical backbone. No one in the non tech world even noticed. The IEEE world however knew all about it.

3



Once the infrastructure was deployed they then graphenated the population through creating a fake pandemic, making people shelter in place (for better tracking and tracing abilities) and injected most of the worlds population with graphene. They needed the graphene injected (big difference from bioaccumulation) in peoples bodies for the amplification of the signals.

4



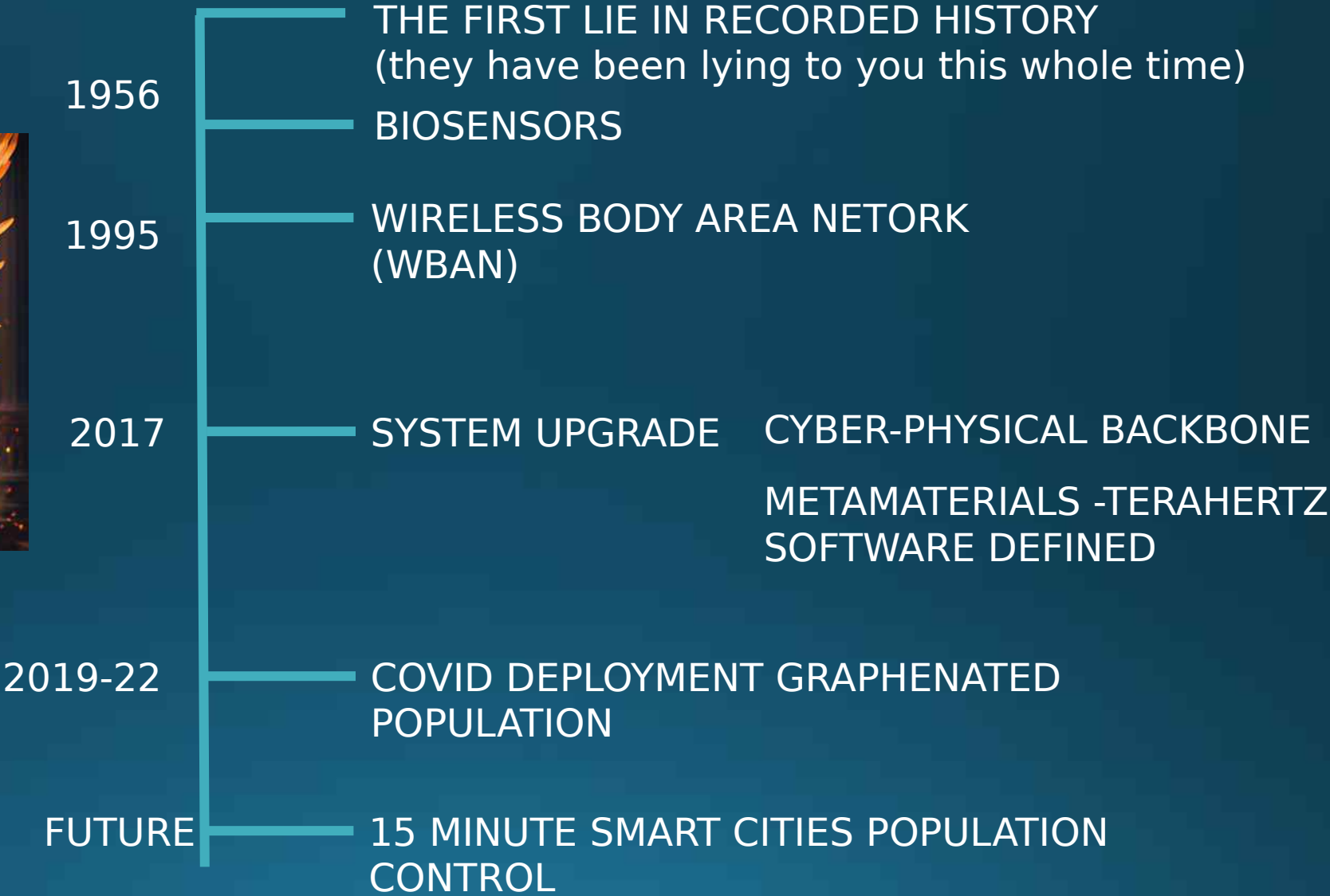
The new system with the graphenated population is now ready for the deployment of 15 minute smart cities as a means to control the worlds population.

# TIMELINE

“YE SHALL BE AS GODS”



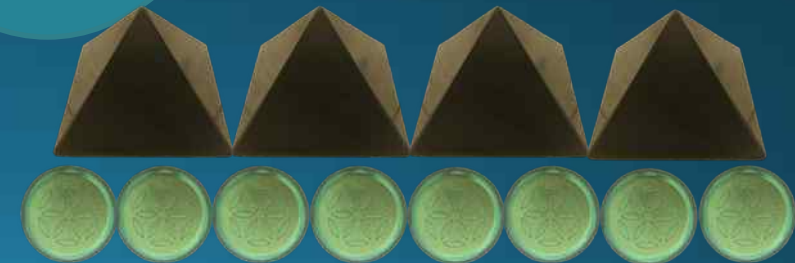
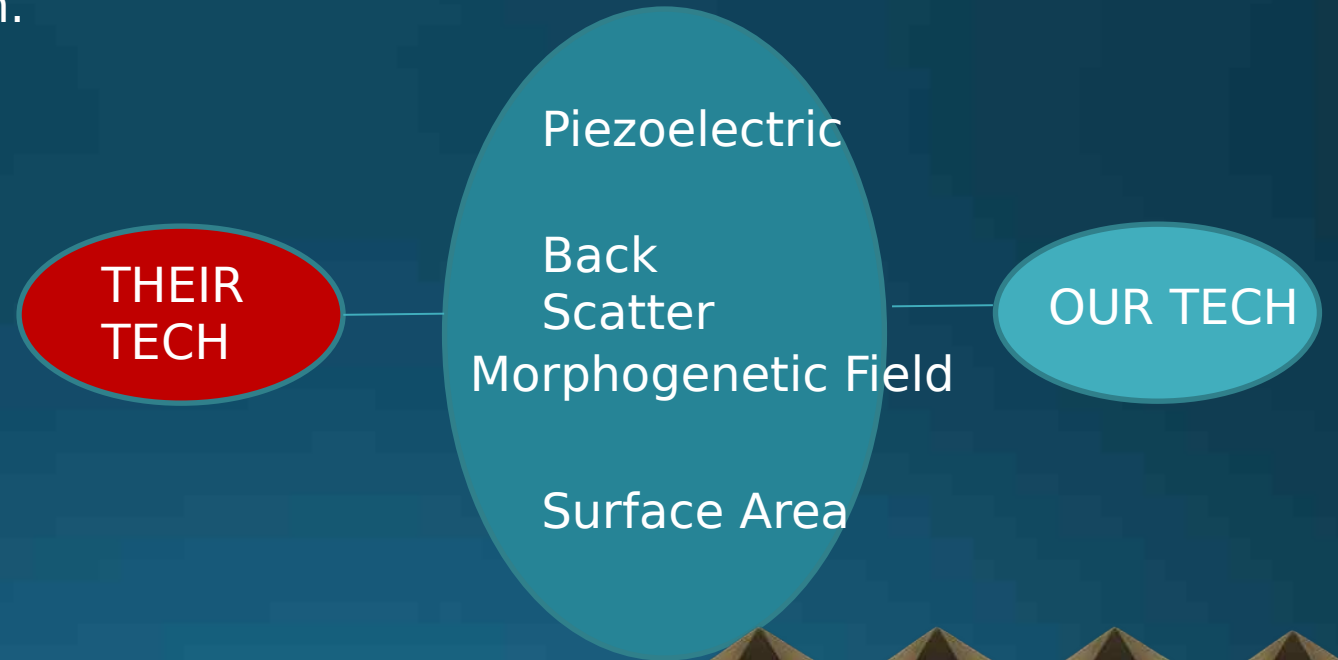
THIS IS TRANSHUMANISM  
THE 4<sup>TH</sup> INDUSTRIAL  
REVOLUTION  
AS IN THE DAYS OF NOAH





# FIGHTING EVIL TECH WITH GOOD TECH ON THE SAME TECH LEVEL

We make products by hand here for EMF protection. These products are based on orgone energy, which is a healthy life preserving energy field generated by a composite of metal powders mixed in an epoxy resin. The end result is something called orgonite. Orgonite uses piezoelectricity, surface area, morphogenetic fields, and backscatter to preserve energy. It can also help fight back against the bad tech.



# “HOPE AND TIVON BIOSENSOR CHALLENGE”

Attention to all the GOOD hackers out there. Lets find the weaknesses in their system, and exploit them to stop the signal.

## IDEAS FOR COUNTERMEASURES

What technologies are IN Biosensors?

Can living bugs modified to be biosensors be killed or detoxed from the body?

Can graphene be safely removed from the body?

Can tracking signals emitted from within the body be scrambled or cloaked- wearables.



**Here are some of their system weaknesses, how do we exploit them?**

Free space

Signal absorption

Interference

Line of sight propagation

Fading

Doppler Effects

Distance (especially 60GHz and Thz bands)

Energy consumption

Coverage

WE NEED ALL HANDS ON DECK! HELP US FIND SOLUTIONS.

# METHODS

Over the past few decades the following government projects played a role in moving the world toward their ultimate goal. Each one is an area to research, here are a few highlights.

**MOSAIC WARFARE** is a concept that involves sending a large number of weapon and sensor platforms at the enemy to overwhelm them. From DARPA using, The Internet of Military Things (IoMT) a class of Internet of things for combat operations and warfare.

**PROJECT MAVEN** Defense Department initiative to integrate artificial intelligence and machine learning across operations to extract objects of interest from imagery. Started by Google and taken over by the Pentagon. Many Google employees left when they realized that the program would be used on civilians in Mosaic Warfare.

**GLOBAL INFORMATION GRID** a network of information transmission and processing maintained by the United States Department of Defense.

**LETHAL AUTONOMOUS WEAPON SYSTEM (LAWS)** a type of autonomous military system that can independently search for and engage targets based on programmed constraints and descriptions. LAWs are also known as lethal autonomous weapon systems, autonomous weapon systems, robotic weapons or killer robots.

**NETWORK CENTRIC WARFARE**, also called network-centric operations or net-centric warfare, is a military doctrine or theory of war that aims to translate an information advantage, enabled partly by information technology, into a competitive advantage through the computer networking of dispersed forces. It was pioneered by the United States Department of Defense in the 1990s.



# THE PENTAGON AND ARTIFICIAL INTELLIGENCE

The DOD held an Artificial Intelligence Symposium in 2020

A DOD directive was issued to deploy AI

Then Biden Executive order On October 30

And the Pentagon Responded

They are Moving FULL STEAM AHEAD



Administration Priorities The Record Bri

OCTOBER 30, 2023

## FACT SHEET: President Biden Issues Executive Order on Safe, Secure, and Trustworthy Artificial Intelligence



BRIEFING ROOM STATEMENTS AND RELEASES

Today, President Biden is issuing a landmark Executive Order to ensure that America leads the way in seizing the promise and managing the risks of artificial intelligence (AI). The Executive Order establishes new standards for AI safety and security, protects Americans' privacy, advances equity and civil rights, stands up for consumers and workers, promotes innovation and

Sections

C4ISRNET

AI & ML Unmanned Battlefield Tech Space Electronic Warfare C

Featured: [Whitepaper: Warfare in the Cyber Era](#) > [Webcast: Comm Challenges in Contested Envir](#)

AI & ML

## Pentagon debuts new data and AI strategy after Biden's executive order

By [Noah Robertson](#) and [Colin Demarest](#)

Thursday, Nov 2



# WIRELESS BODY AREA NETWORK

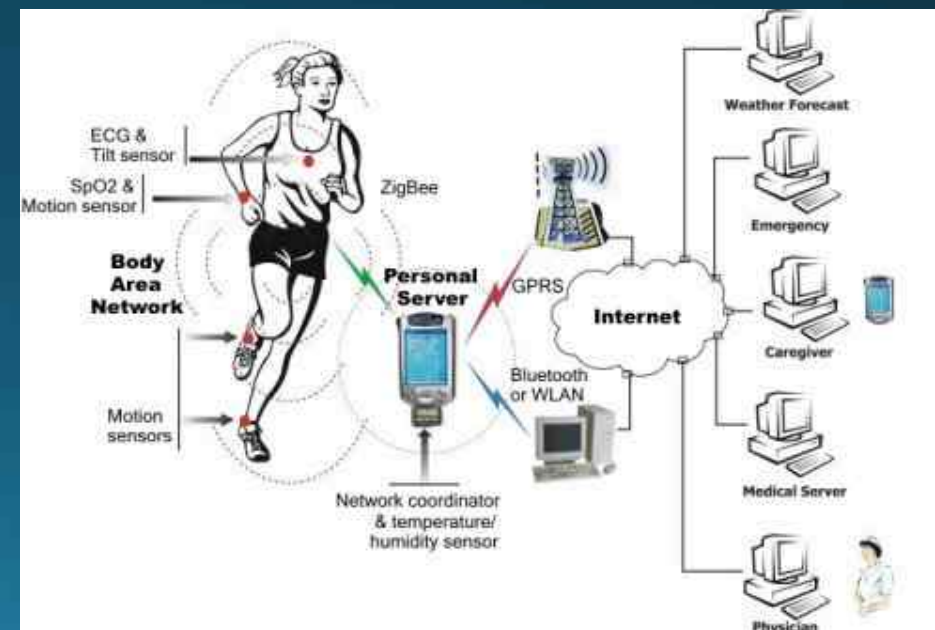


Our bodies are being used as a communications propagation system since 1995.

A Wireless Body Area Network (WBAN) or a body sensor network connects independent nodes (e.g. sensors and actuators) that are situated in the clothes, on the body or under the skin of a person. The network typically expands over the whole human body and the nodes are connected through a wireless communication channel.  
<https://www.waves.intec.ugent.be/research/wireless-body-area-networks>

## Computer Area Networks

Nano- a network of biosensors which is inside of your body (BAN)  
BAN - Your Body area network which is inside of your personal Area network (PAN) which is your computer electronic devices within your personal workspace, which is inside of a local area network (LAN) which is a network in limited area like a university campus, residence which sits inside of a CAN...etc. **BIOSENSORS ARE HERE**





# INTERNET OF BODIES (IOB)

IoB is “a growing industry of devices that monitor the human body, collect health and other personal information, and transmit that data over the Internet.”

Researchers who have been finding nanotechnology when they are looking at the blood under the microscope need to understand that there is an industry of people who work daily jobs that are regulating these nano networks. These are the biosensors and components that make up the Wireless Body Area Network and the Internet of Bodies.

THIS IS WHAT THEY HAVE BEEN PLANNING FOR DECADES AND WHY THEY NEEDED TO UPGRADE THEIR SYSTEM

WORLD ECONOMIC FORUM  
Join us Sign in

INTERNET OF THINGS

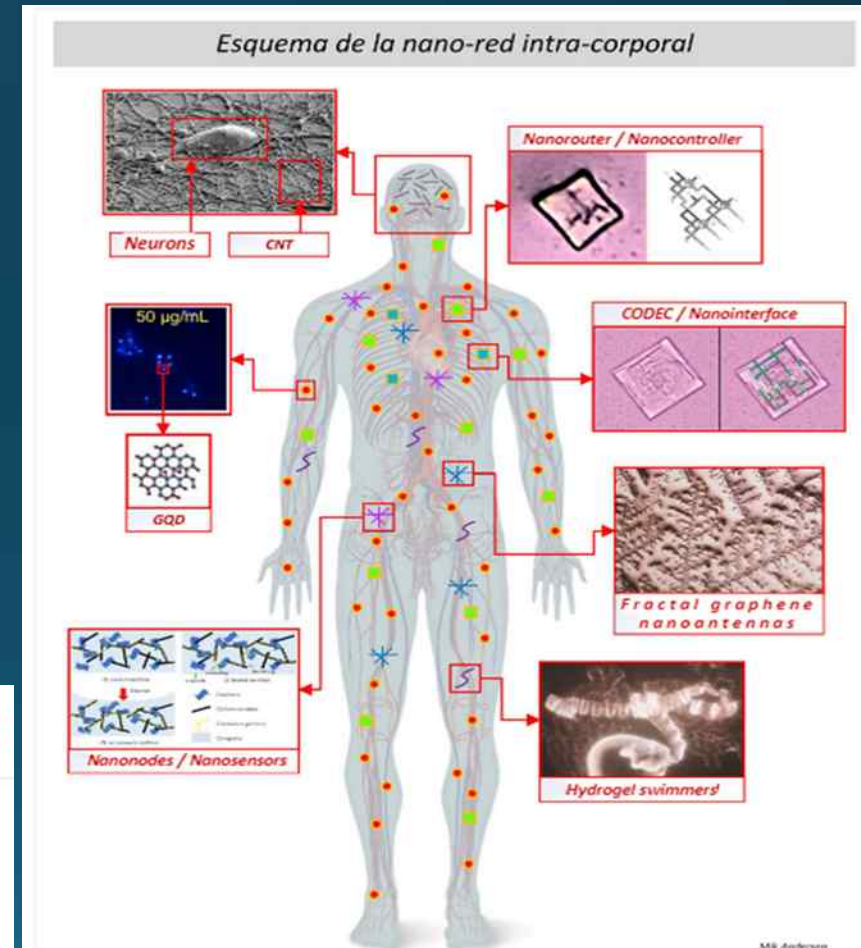
## Tracking how our bodies work could change our lives

Jun 4, 2020

WORLD ECONOMIC FORUM  
Join us Sign in

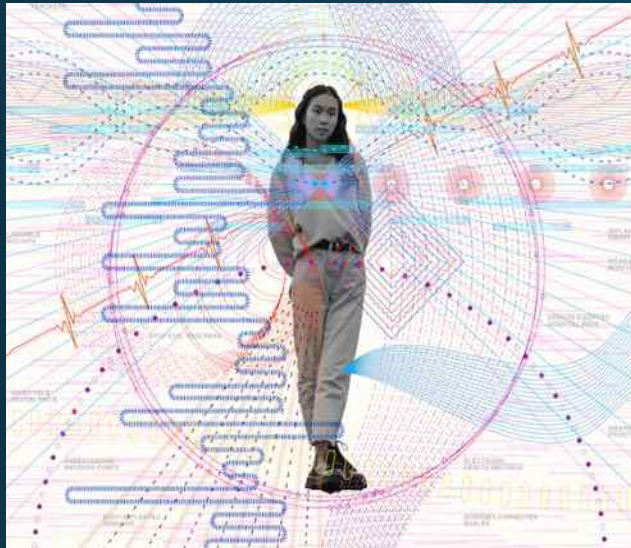
This article is part of:  
[Centre for Urban Transformation](#)

- We're entering the era of the "Internet of Bodies": collecting our physical data via a range of devices that can be implanted, swallowed or worn.
- The result is a huge amount of health-related data that could improve human wellbeing around the world, and prove crucial in fighting the COVID-19 pandemic.





# INTERNET OF BODIES EXAMPLES (FROM RAND.ORG)



## Brain-Computer Interfaces

- MEDICAL DEVICE
- IMPLANTED

BCIs use electrodes that connect signals from the brain to a computer. They may be either implanted in the brain or noninvasive (wearable or attached to the skull).

BCIs under development aim to read and type entire words directly from the brain, or control prosthetic limbs from the mind.



## Body-Implanted Sensors

- CONSUMER DEVICE
- IMPLANTED

Tissue-integrated biosensors under development may provide more precise and expansive bio-tracking than traditional wearables. These implanted sensors also may have additional functionality, such as a skin-grafted interface that enables the user to remotely control other devices.



## Wearable Neuro-Devices

- CONSUMER DEVICE
- WEARABLE

Head-wearable neuro-devices record and monitor brain activity and stimulate the brain through electrical signals. Some are used to encourage the user to perform brain exercises. Others might send electrical signals to the brain to treat such conditions as chronic pain, depression, attention deficit disorder, and post-traumatic stress disorder.



## Implantable Cardiac Devices

- MEDICAL DEVICE
- IMPLANTED

Newer cardiac pacemakers, implantable cardioverter defibrillators, and ventricular assist devices can provide real-time and continuous information regarding a patient's cardiac fluctuations and enable remote device management to automate technical checks, such as battery status, lead impedance, and sensing or pacing thresholds.



## Freestanding Infusion Pumps

- MEDICAL DEVICE
- FREESTANDING

Programmable infusion pumps and dose error-reduction systems are now commonly used in hospitals for intravenous medication delivery.

These systems integrate medication databases with infusion pumps and allow for automation of alarm systems that alert providers when programming errors have occurred.



## Ingestible Digital Pills

- MEDICAL DEVICE
- IMPLANTED

In 2017, the FDA approved the first digital pill: aripiprazole tablets with an ingestible sensor embedded in the pill that records that the medication was taken. The system works by sending a message from the pill's sensor to a wearable patch that transmits the information to a mobile app so that patients can track the ingestion of the medication on their smartphones.



## Wearable Health Trackers

- CONSUMER DEVICE
- WEARABLE

Bracelets, watches, rings, and smartphone apps that track steps, heart rate, sleep patterns, and other physical data, such as how much alcohol the wearer consumed.



# “GREEN ENERGY” IS SOYLENT GREEN ENERGY

“Nanoscale wireless networks are expected to revolutionize a variety of domains, with significant advances conceivable in in-body healthcare. In healthcare, these nanonetworks will consist of energy-harvesting nanodevices passively flowing through the bloodstream, taking actions at certain locations, and communicating results to more powerful Body Area Network (BAN) nodes. From Paper Below.

ENERGY HARVESTING YOUR BODY TO RUN A TERAHERTZ NETWORK

ResearchGate Search for publications, researchers, or questions or Discover by subject

Home > Waves > Electromagnetic Waves > Physics > Terahertz

Preprint PDF Available

Toward Location-aware In-body Terahertz Nanonetworks with Energy Harvesting

January 2021 License - CC BY 4.0

Authors:

Download file PDF

Read file



Energy harvesting Internet of Things health-based paradigm: Towards outage probability reduction through inter-wireless body area network cooperation

[Ahmed A Thabit](#), [Mahmoud Shuker Mahmoud](#), [...] and [Qammer H Abbasi](#) [View all authors and affiliations](#)

[All Articles](#) | <https://doi.org/10.1177/1550147719879870>



# WIRELESS HEALTHCARE HOW THEY CONTROL YOUR HEALTH



IEEE EMBS are the **WORLDS LARGEST** international society of **BIOMEDICAL ENGINEERS.**

WIRELESS HEALTH CARE IS WHAT THEY ARE CALLING:

Precision Health Care  
Designer Drugging  
Electroceuticals  
Nanothermonostics  
Biomedical Tissue Engineering  
Regenerative Medicine

This is the industry that is changing your DNA, bringing in transhumanism and hooking your body up to the cloud.



# MEDICAL BODY AREA



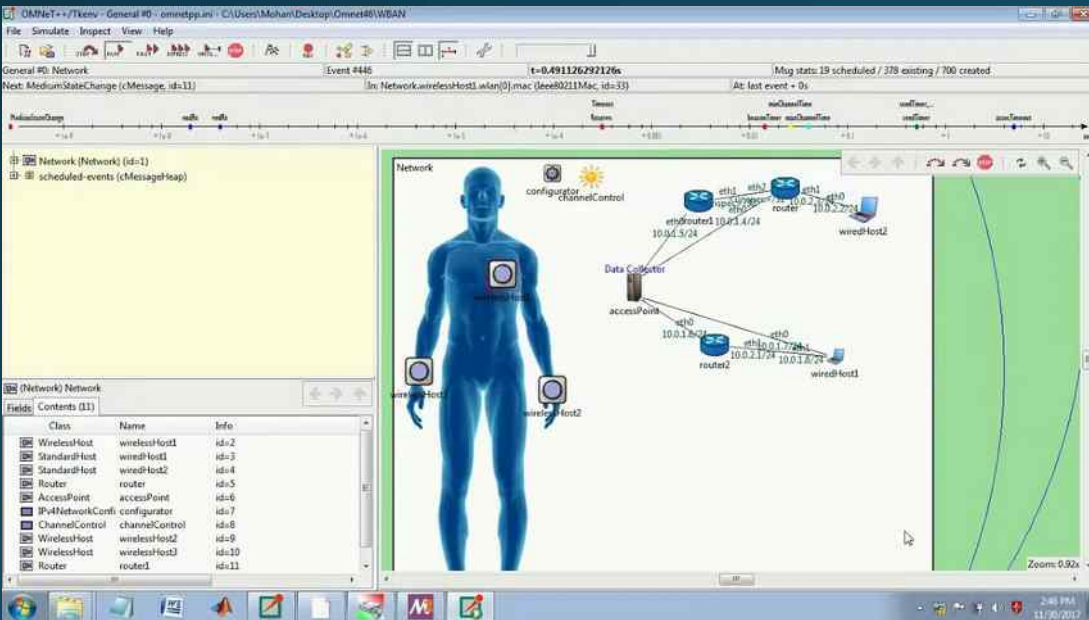
MEDICAL BODY AREA NETWORKS FIRST REPORT AND ORDER FROM THE FCC 2012

## INTRODUCTION

1. By this Report and Order and Further Notice of Proposed Rulemaking (Further Notice), we expand our Part 95 MedRadio rules to permit the development of new Medical Body Area Network (MBAN) devices in the 2360-2400 MHz band, and propose procedures for selecting a party to register and coordinate MBAN use of the 2360-2390 MHz portion of the band.

The MBAN technology will provide a flexible platform for the wireless networking of multiple body transmitters used for the purpose of measuring and recording physiological parameters and other patient information or for performing diagnostic or therapeutic functions, primarily in health care facilities. This platform will enhance patient safety, care and comfort by reducing the need to physically connect sensors to essential monitoring equipment by cables and wires. Our decision herein is the latest in a series of actions to expand the spectrum available for wireless medical use. Hospitals use Medical Body Area Networks and a software called OMNET to report data from human bodies up to the cloud. This was done in hospitals during COVID. Data ran through PROJECT SALUS - A Pentagon effort that provided predictive logistics tools for **COVID-19** response to the command.

We did a report with Todd Callender about this data being reported to a database in ISRAEL.



# INTERNET OF BEHAVIOR CAN THIS EXPLAIN WHAT WE'VE BEEN EXPERIENCING?

FORBES > INNOVATION

## The Internet Of Behavior Is The Next Trend To Watch



Emmanuel Ramos Forbes Councils Member  
Forbes Technology Council  
COUNCIL POST | Membership (Fee-Based)

Mass formation psychosis  
Division Right / Left  
Psychologic OPS  
Planned Protests and Movements

General Behavior Changes in our Family  
Friends and Loved ones, especially after the  
vaccines.

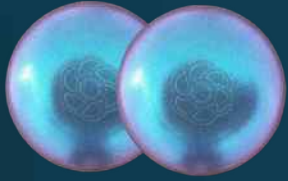
Internet of Behavior (IoB). IoB offers a revolutionary way to monitor, control and model human behavior

IoB is a system that uses sensors and other technologies to monitor, analyze and predict human behavior. It combines artificial intelligence (AI), machine learning (ML), big data analytics, cloud computing, Internet of Things (IoT) devices, mobile applications, wearable devices, augmented reality (AR), virtual reality (VR), robotics automation systems and more into one comprehensive platform for collecting behavioral data from individuals or groups. The collected data can then be used for various purposes such as predictive analytics or automated decision-making processes.





# ABOUT OUR EMF PROTECTION PRODUCTS



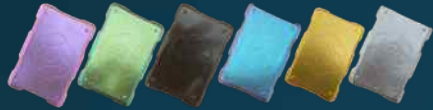
SLEEPING PODS For a good nights sleep



HELP SUPPORT SGT REPORT BY SHOPPING FROM THIS LINK:  
<https://www.ftwproject.com/ref/6/>



CHARGE PLATES for use around the home, to preserve food and more

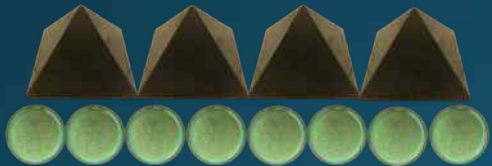


PHONE SHIELDS to put on your cell phone, laptop and routers



PENDANTS for personal emf protection on your body

**“We just can't believe our eyes! We have placed the garden pucks from our first order around our property, and the plants/trees with the pucks are BLOOMING within days! This is happening with every single place the pucks have been rested. Just incredible.” - Australia**



PYRAMIDS and garden sets for gridding your home / property / garden for emf protection on a large scale

All Handmade by us in Morocco, shipped worldwide to thousands of happy customers since 2017

SCIENTIFIC STUDIES AND DOCUMENTATION DESCRIBING HOW OUR PRODUCTS WORK AVAILABLE ON OUR WEBSITE.



TILES for incorporating emf protection into construction projects

[WWW.FTWPROJECT.CO](http://WWW.FTWPROJECT.CO)